

**Kistler Maschinen-
und Anlagenbau GmbH**
Mackstrasse 84
D-88348 Bad Saulgau, Germany
Tel +49 (0) 75 81 4 88 82-0
Fax +49 (0) 75 81 4 88 82-22
info@kistler-machine.de
www.kistler-machine.de

PRODUKTBESCHREIBUNG

The SCM machines can be equipped with 2, 3 or 4 PLC-controlled axes which enables the machine to cut pipes in conjunction with --a plasma or oxy-fuel torch in prefabrication.

The workpiece is clamped and turned by a driven chuck (axis 1), then the torch is moved over the pipe (axis 2). These two axes result in all cutting shapes.

Optionally, the machine can be supplied with a third controlled axis. By tilting the torch to the left and right, all end cuts (straight and bevel cuts as well as adjustments) can be made with variable, programmable weld preparation.

The addition of a fourth controlled axis (torch tilting forwards and backwards) allows additional penetrations and slots to be cut with variable, programmable weld preparation.

All programming is menu-driven, the machine is therefore easy to operate.

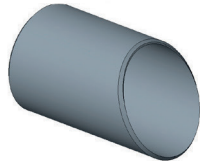
APPLICATION:

Pipe cutting machines of the SCM range are used for pipe cutting and profiling in the work shop as well as on site.

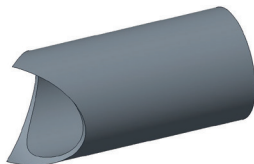
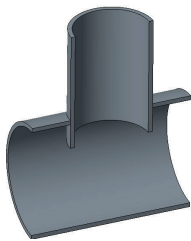


SCM 630 prepared for Plasma Cutting, with 3rd controlled axis (allows bevelling of end cuts) and 21 inch through hole chuck.

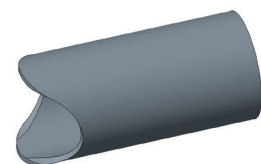
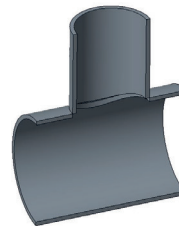
STRAIGHT CUT / MITER CUT



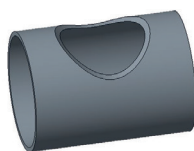
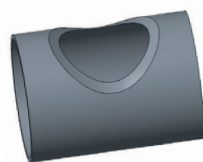
BRANCH SITTING IN MAIN PIPE



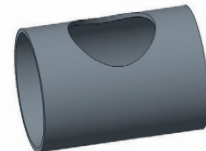
BRANCH SITTING ON MAIN PIPE



HOLE FOR BRANCH SITTING IN MAIN PIPE



HOLE FOR BRANCH SITTING ON MAIN PIPE



Model	Workpiece diameter		Torch stroke	Through-hole optional		Cutting speed max.
	1"	12"		4"	10.5"	
SCM 300	1"	12"	20"	4"	10.5"	6.25' /min
SCM 400	1"	16"	40"	6"	14.25"	6.25' /min
SCM 630	1"	25"	60"	8"	21.25"	6.25' /min

- We reserve the right to alter specifications without prior notice -

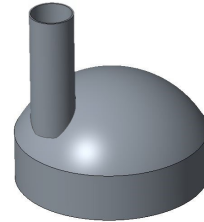
SCM RANGE

PIPE CUTTING MACHINES

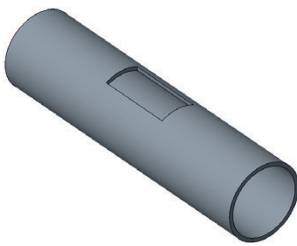
ELBOW SUPPORT



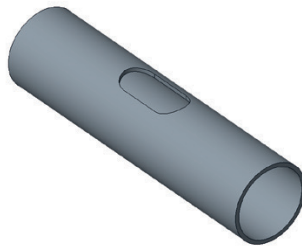
STUD ON DISHED END



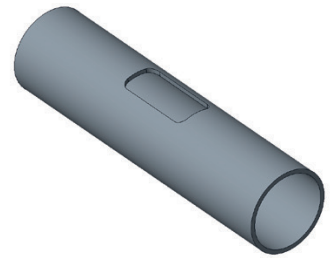
RECTANGLE



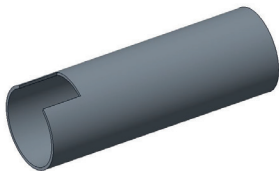
RECTANGLE WITH RADIUS



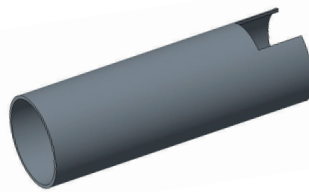
RECTANGLE WITH PROGRAMMABLE RADIUS



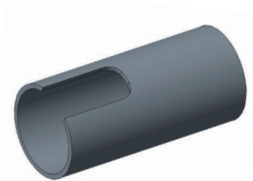
LEFT OPENING



RIGHT OPENING



OPENING WITH RADIUS





**Kistler Maschinen-
und Anlagenbau GmbH**

Mackstrasse 84

D-88348 Bad Saulgau, Germany

Tel +49 (0) 75 81 4 88 82-0

Fax +49 (0) 75 81 4 88 82-22

info@kistler-machine.de

www.kistler-machine.de